

West Burton flooding

In response to Examiners Question 1.15.9 Flooding

I have attached a number of photos of flooding from the last few days and weeks. I think these speak for themselves. The A156 has been closed on and off from 2nd January 2024, which is the main commuter road between Gainsborough and Lincoln. This road was also flooded 2019. Diversions take you via villages Kexby, Willingham, Stow, Sturton and Saxilby which has increased traffic on this rural route at rush hour times.

Dunham bridge has severe flooding and has been closed since the 5th January 2024, remains closed today, 9th January, and is not looking likely to open any time soon. Fields and houses either side of the river are underwater.

Trent bridge at Gainsborough has been closed since the 6th January and remains closed due to the rising level of the River Trent and water across the road to Beckingham. The Trent is tidal so the levels rise and fall, but there is significant flooding across a vast area of land as you can see in the photos.

These bridges are the two main crossings over the River Trent in this area. To cross at other points would mean travelling to Newark or Scunthorpe, and both alternative routes add between 40 and 50 miles to a journey. We rely heavily on these two bridges, for work, school, and generally travelling across the Lincolnshire / Nottinghamshire border.

I have included a map which shows all the locations where photos have been taken, and the road closures at Beckingham to Gainsborough and the A57 at Dunham on Trent.

The Foss Dyke is a branch off the River Trent which goes all the way to Lincoln and causes the Brayford Wharf to flood into pubs, restaurants and other businesses. The images attached are from storm Babet and Henk.

The Foss Dyke has repeatedly burst its banks in the village of Saxilby over the last few months coming very close to houses. It also joins with the River Till which has repeatedly flooded fields and roads on either side in the last few months. The disruption to the River Trent for cable routes and the vast amount of land which will be covered in solar panels will surely have a detrimental effect on an this area, which is already so susceptible to flooding.

Submission ID: 25409

Further to my previous submission on the flooding, I have just seen this post on social media from Nottinghamshire County Council in response to people asking if Trent bridge and the A631 (also named The Flood Road) is open. They stated at 3.56pm on 9th January 2024, that is "It is closed currently due to the amount of surface water still present in the subsoil rather than on the road itself. If the road was reopened currently, the vibrations caused by vehicles could potentially cause damage to the carriageway and the bridges."



Michael Kheng
KURNIA AERIAL PHOTOGRAPHY



Brayford Wharf,
Lincoln





Brayford Wharf

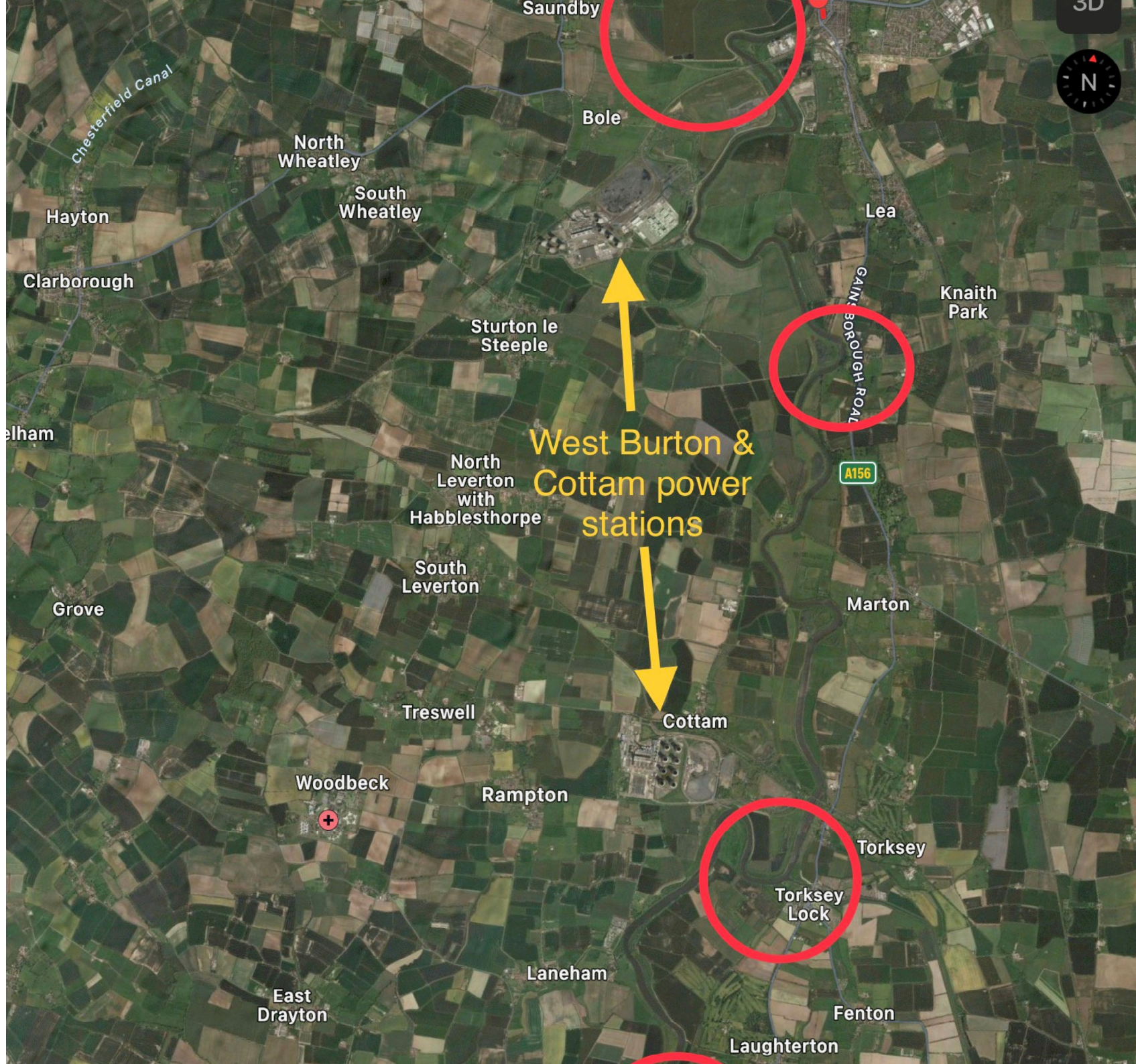


Brayford Wharf,
Lincoln



Knaith Park A156
Be careful!!





West Burton & Cottam power stations

Saundby

Bole

North Wheatley

South Wheatley

Hayton

Clarborough

Lea

Knaith Park

Sturton le Steeple

GAINSBOROUGH ROAD

A156

North LeVERTON with HabbleshORPE

West Burton & Cottam power stations

South LeVERTON

Marton

Grove

Treswell

Cottam

Woodbeck

Rampton

Torksey

Torksey Lock

East Drayton

Laneham

Fenton

Laughterton



Dunham Bridge,
looking to Cottam
and West Burton
power stations



River Trent burst banks at Laughterton



Dunham bridge




Dunham Bridge



Looking North from Dunham bridge



River Trent burst banks at Gainsborough

An aerial photograph showing a landscape heavily affected by flooding. A multi-lane asphalt road runs diagonally from the bottom center towards the top left. The road is flanked by a dense line of trees and bushes. On either side of the road, large areas of land are submerged in murky, brown floodwater. In the distance, a small town or village is visible, with buildings and more trees. A tall, metal lattice tower, likely for power lines, stands in the water on the right side of the road. The sky is overcast and grey.

Flooded fields looking
West from
Gainsborough to
Beckingham



Flooded fields looking East
from Beckingham towards
Gainsborough



Torksey Lock looking at Cottam power station

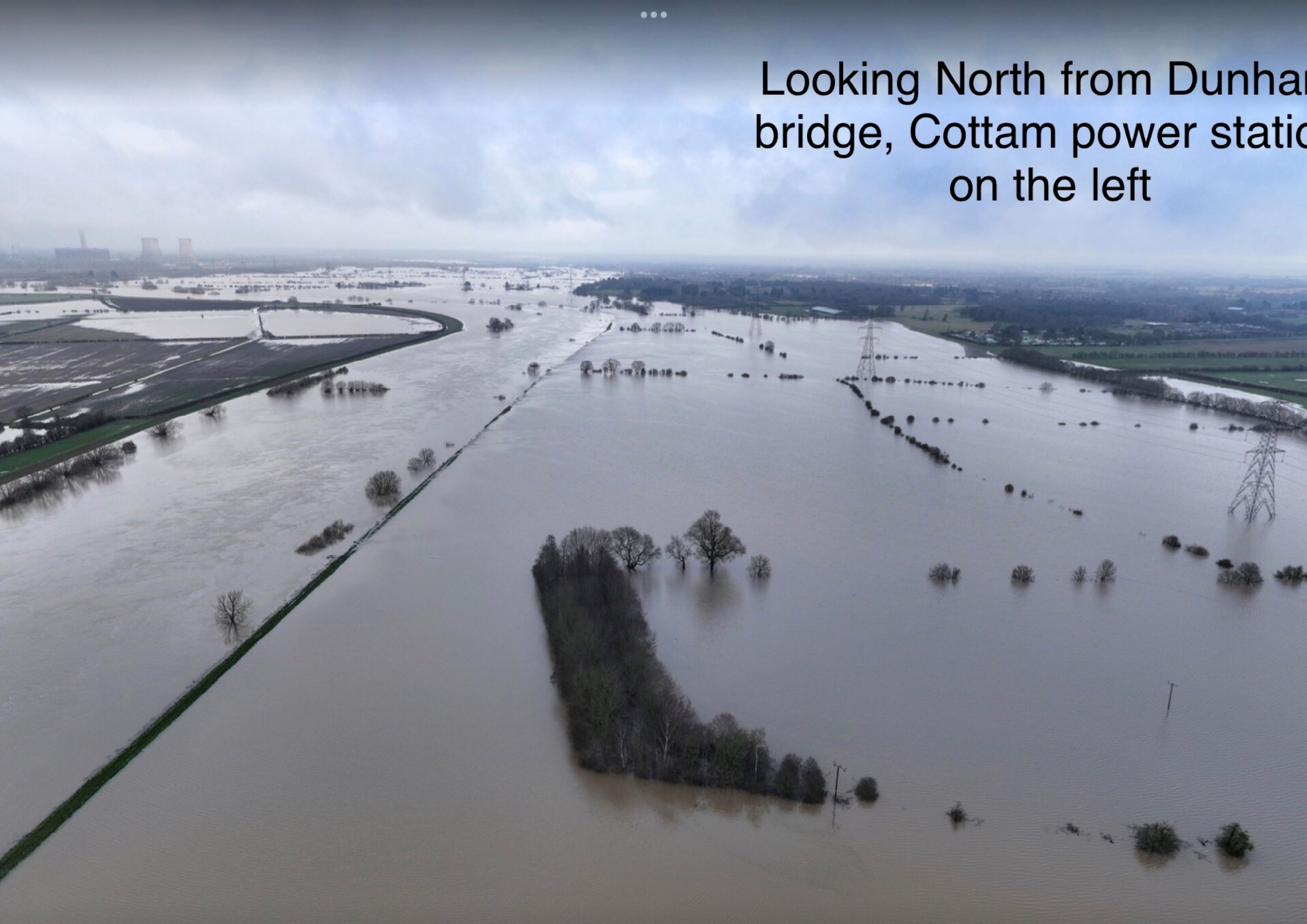


Torksey Lock



Torksey Lock

Looking North from Dunham
bridge, Cottam power station
on the left





A156 at Knaith



Fosdyke Saxilby

It is closed currently due to the amount of surface water still present in the subsoil rather than on the road itself. If the road was reopened currently, the vibrations caused by vehicles could potentially cause damage to the carriageway and the bridges.

Thanks, Jason

3:56 PM • Jan 9, 2024

www.pikaso.me



Like



Comment



Send



Nottinghamshire County Council

@NottsCC



@jordan8396 Hi,

Unfortunately, we do not have a definitely timescale in place however we would expect the